

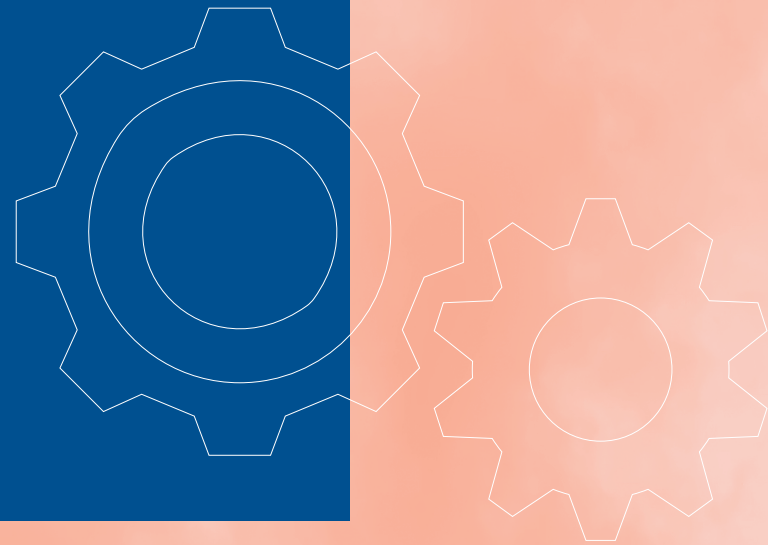


Baltimore Museum
OF Industry

**Flexibility.
Empathy.
Accessibility.
Honesty.**

ANNUAL REPORT 2022

**Flexibility.
Empathy.
Accessibility.
Honesty.**



The Baltimore Museum of Industry's values are reflected in everything we do. Thanks to the generosity of our many supporters, our values inspired an exciting array of programs and activities in 2022.

As we emerged from the pandemic, we found that people craved connection—with the stories of workers, with the legacy of the city's past, with hope for its future. And with one another. The BMI stepped up, providing a venue for connection and a forum for consideration of the meanings of industry past, present, and future.

BALTIMORE MUSEUM OF INDUSTRY

"I joined the museum as a sponsor so that I could support your incredible mission. Thank you for your tireless efforts to bring Baltimore's history to life for the next generations."

MAGGIE WEBBERT, BMI MEMBER

FLEXIBILITY:

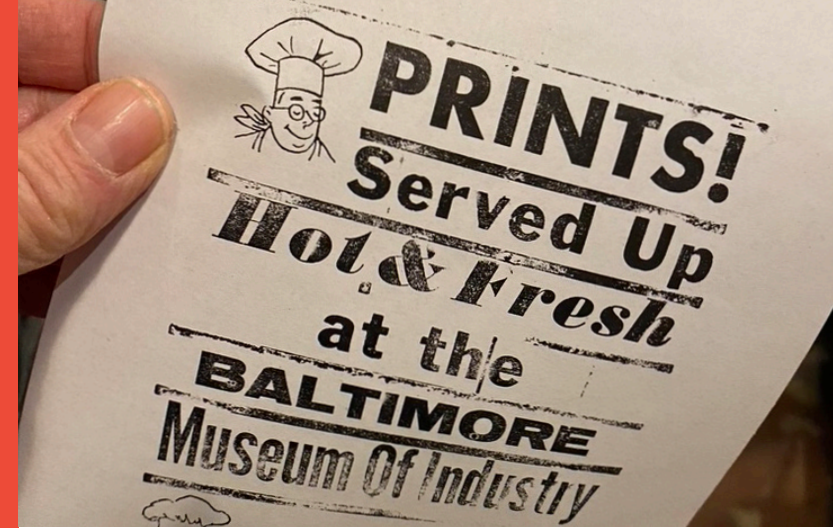
On a spectacular May evening, we brought back an in-person Stoop Storytelling performance. We delivered our first-ever Mini Golf event, a fun-filled in-person fundraiser that had patrons putt-putting through the exhibition galleries.

Even as we hosted on-site programming, we continued to maintain a robust array of digital programs. We piloted a new Lunch & Learn virtual series and grew our popular online Baltimore Narratives lectures. And while we were overjoyed as field trips rebounded and school children filled our galleries, we continued to offer off-site and online options in order to meet the evolving needs of teachers as students reacclimated to in-person learning.

ACCESSIBILITY:

We embraced the ongoing challenge of more fully achieving our mission of serving as a welcoming museum for all members of our community.

We are now proud to offer a Spanish-language version of our popular audio tour. New displays in several of our exhibition galleries focus on previously untold stories of working people—including African Americans, immigrants, women, and other underrepresented groups—who earned their livelihoods from Baltimore's many industries and who are propelling the city's ongoing progress.



EMPATHY:

At its core, empathy is about relationships. All of our programs and activities have been strengthened through community partnerships.

We created our *Food for Thought* exhibition together with Baltimore City Public Schools, collaborated with partners to expand the reach of public programs, and strengthened ongoing collaborations such as our partnership with the Baltimore Children's Business Fair, which brought young entrepreneurs to the campus in October.

HONESTY:

Like all museums, the BMI continues to feel the disruptions brought about by the pandemic, which upended the ways we interact with our communities. This year, we met those challenges openly, launching a strategic planning process that will chart a course for the museum's future. That vision calls on us to meet our commitment to building a staff and board that is more broadly representative of the communities we serve, and to create programs and exhibitions that thoughtfully address the complex issues surrounding work and industry.

As always, your support makes this important work possible.

Baltimore Children's Business Fair

On a sunny day in October, the BMI was proud to host the sixth annual Baltimore Children's Business Fair, featuring businesses created and launched by children. The campus came alive as shoppers mingled with future entrepreneurs, learning about their business plans and purchasing homemade products ranging from soaps and jewelry to baked goods and bowties.

Young entrepreneurs participating: **25**
Shoppers on campus: **351**



“We had great feedback from the participants, parents, and visitors. My sincere appreciation for your team’s support. I appreciate the BMI’s continued partnership.”

JANEAR GARRUS, FOUNDER,
BALTIMORE CHILDREN’S BUSINESS FAIR

**“My father took a lot of industry pictures,
and where better to showcase them? The BMI is
a Baltimore institution and he loved Baltimore.”**

JENNIFER BODINE

A. Aubrey Bodine Collection

The museum received an important collection of original prints by Baltimore photojournalist and pictorialist A. Aubrey Bodine. Thanks to a generous donation from Jennifer Bodine, the photographer's daughter, the museum is now the steward of all of Bodine's industry-related photos. This breathtaking collection includes urban, rural, and maritime scenes, each print painstakingly manipulated by the artist through a variety of darkroom techniques. High-resolution scans of the photographs will be available to researchers in 2023, significantly expanding the museum's photographic collection of 20th-century industry and work.

Original prints received:

2,182

JENNIFER BODINE PRESENTS THE
COLLECTION TO BMI ARCHIVES
MANAGER MAGGI MARZOLF
DURING AN OCTOBER VISIT TO
JENNIFER'S HOME.



Food for Thought

More than a quarter of children living in Baltimore City face food insecurity. *Food for Thought*, an exhibition developed in partnership with Baltimore City Public Schools, shines a light on issues of childhood hunger and honors a group that is helping to feed children every day: Baltimore City Public School Food and Nutrition Services employees who prepare and distribute meals to Baltimore City students. In September, we opened a satellite *Food for Thought* display at Baltimore City Public Schools district headquarters.

Food and Nutrition Services employees honored in Food for Thought:

9

Meals prepared and distributed to Baltimore City students annually by FNS employees:

88,000

THE *FOOD FOR THOUGHT* DISPLAY AT BALTIMORE CITY PUBLIC SCHOOLS DISTRICT HEADQUARTERS SERVED AS A LIVELY BACKDROP FOR STUDENT PERFORMANCES AND ACTIVITIES.

PHOTO CREDIT: BALTIMORE CITY PUBLIC SCHOOLS



“We are part of the learning process with the kids, because a child cannot learn if they’re hungry.”

SHELIA ALSTON, FOOD & NUTRITION
OPERATIONS MANAGER, RETIRED

SUPPORTED BY THE INTERNATIONAL COALITION OF SITES OF CONSCIENCE, *FOOD FOR THOUGHT* WAS MADE POSSIBLE IN PART BY THE INSTITUTE OF MUSEUM AND LIBRARY SERVICES AND THE BALTIMORE CITY PUBLIC SCHOOLS FOOD AND NUTRITION SERVICES DEPARTMENT WITH ADDITIONAL SUPPORT FROM FREESTATE ELECTRIC, SAFEWAY, THE DELAPLAINE FOUNDATION, MCCORMICK AND CO., SOUTHWAY BUILDERS, THE EDWARD ST. JOHN FOUNDATION, AND SAVAL FOODSERVICE.

“It has been such a pleasure working with the BMI team on the Baltimore Public Radio Reunion. This could not have been run any better. We heard such great feedback from attendees and participants.”

**SAM SESSA, DIRECTOR OF EVENTS & COMMUNITY ENGAGEMENT,
WTMD & WYPR**

PHOTO CREDIT: DAVID LAMASON

Public Radio Reunion

From the 1970s to today, public radio has had a profound impact on Baltimore’s news, music, and culture. In December, the BMI was proud to partner with WYPR and WTMD to host a Public Radio Reunion. The evening was full of hearty laughs and abundant smiles about a serious industry, and the museum shone as a gathering place for public radio supporters, enthusiasts, and industry professionals.

Attendees:

250

**Public radio personalities
in conversation:**

12

GUESTS HAD AN OPPORTUNITY TO MEET AND HEAR FROM SOME FAVORITE PUBLIC RADIO PERSONALITIES AND LEARN HOW BALTIMORE’S PUBLIC RADIO STATIONS CAME TO BE—AND WHAT THE FUTURE MAY HOLD.

School Programs

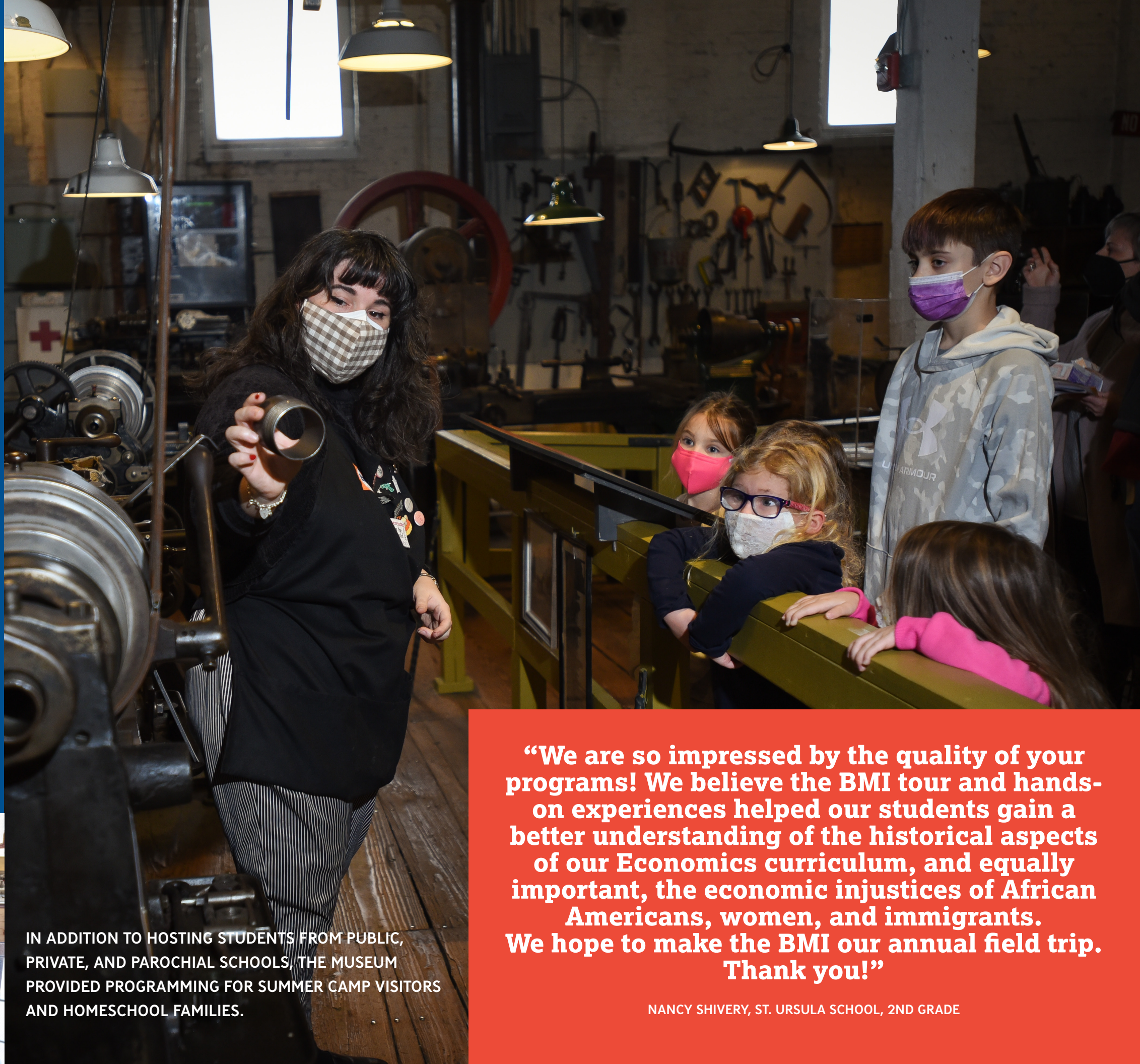
Our galleries buzzed with activity as students returned to in-person learning this year. A leader in experiential learning, the BMI offered a menu of interactive field trip experiences for students from preschool through high school. At the same time, we provided programs in a variety of other formats including classroom outreach visits to accommodate the needs of teachers and students. The museum continued to serve as a valuable educational resource for teachers as they juggled changing schedules and school bus shortages, and worked to combat learning loss students experienced during the pandemic.

Student field trip visitors: **7,348**

Students served in classrooms: **1,938**

Virtual school group visitors: **182**

Home school visitors: **394**



IN ADDITION TO HOSTING STUDENTS FROM PUBLIC, PRIVATE, AND PAROCHIAL SCHOOLS, THE MUSEUM PROVIDED PROGRAMMING FOR SUMMER CAMP VISITORS AND HOMESCHOOL FAMILIES.

“We are so impressed by the quality of your programs! We believe the BMI tour and hands-on experiences helped our students gain a better understanding of the historical aspects of our Economics curriculum, and equally important, the economic injustices of African Americans, women, and immigrants. We hope to make the BMI our annual field trip. Thank you!”

NANCY SHIVERY, ST. URSULA SCHOOL, 2ND GRADE

**“We had a very blessed and spectacular season!
We so appreciate you having us and hope you will ask
us to return.”**

GINNY AND CRAIG MARSH, WICKED GOOD SWEETS

PHOTO CREDIT: MADISON SHORT

Farmers' Market

In its fourteenth season, the BMI Farmers' Market continued to serve as a community resource and a vital connection between the museum and the South Baltimore peninsula. This year, the museum partnered with full-season vendors such as Tuckey's Fruit & Vegetable Farm, Valencia's Produce, and Haven Oak Garden Bakery, as well as a variety of artisan pop-ups. All products were grown or made within 150 miles of the museum, and more than half of this year's vendors were based in Baltimore City. In addition, the Market welcomed 15 community interest organizations, ranging from direct service providers such as Thread and Reading Partners, to other cultural institutions, to groups located in South Baltimore.

Vendors:

33

Opening day shoppers:

500+

Season shoppers:

9,046

WE ARE GRATEFUL TO LIFEBRIDGE
HEALTH FOR THEIR CONTINUED SUPPORT
OF THE BMI FARMERS' MARKET.

Oyster Gardening

With a waterfront location and a building that at one time served as an oyster cannery, the BMI is committed to offering programs that shine a light on the environmental legacy of industries that were once located around the harbor. In partnership with the Chesapeake Bay Foundation, the Waterfront Partnership, and the Downtown Sailing Center, visitors were invited to help tend to oyster gardens located on BMI's shore. Once grown, the matured oysters were taken by boat to a protected oyster sanctuary in the Patapsco River to live out the rest of their lives. Community members were also encouraged to drop off rinsed oyster shells at a new recycling center on the BMI's campus. The shells are used to help with CBF's oyster recovery and Bay preservation efforts.

Oyster cages
maintained at BMI
waterfront:

50

Oyster spat
planted:

5,375

Volunteer
workshops:

5

PHOTO CREDIT: MARY BRAMAN



“We grow oysters because of their amazing ability to filter pollution out of the water and because of the critical habitat they provide.

Two hundred years ago there were enough oysters to filter all of the water in the Chesapeake Bay in less than a week. Today it takes the remaining oysters over a year to filter the same amount of water.”

CHESAPEAKE BAY FOUNDATION

THE PROGRAM IS MADE POSSIBLE WITH
SUPPORT FROM THE CHARLES A.
AND LOIS H. MILLER FOUNDATION

“Really enjoyed working on this with you. I learned a lot about Baltimore meatpacking, from both you and my father. Until your interview, I had gotten bits and pieces of the company history but nothing as complete as what he related that day. Again, without the interview, this never would have happened. The audio recording is priceless and I am truly grateful.”

BILL RUPPERSBERGER, JR., PRESIDENT OF THE OLD LINE CUSTOM MEAT COMPANY, WHOSE FAMILY’S STORY WAS FEATURED IN OUR UPDATED EXHIBITION ABOUT BALTIMORE’S MEAT PACKING INDUSTRY IN THE MUSEUM’S FOOD PROCESSING GALLERY



Reframing the Narrative

For more than four decades, the BMI has captivated the public with immersive exhibits about the history and legacy of Baltimore industry. In 2022, we updated several exhibition galleries with new images and interpretation focusing on the stories of ordinary workers who earned their livelihoods from Baltimore’s many industries. By presenting the often untold stories of working people—including African Americans, immigrants, women, and other underrepresented groups—the BMI aims to foster a stronger sense of inclusion for all visitors, and begin the process of establishing a new framework for future exhibition content.

Galleries updated:

4

REFRAMING THE NARRATIVE WAS MADE POSSIBLE BY THE BALTIMORE NATIONAL HERITAGE AREA, HOWARD BANK, WHITING-TURNER, AND HENRY G. PARKS FOUNDATION



THE STAFF OF THE BALTIMORE AFRO-AMERICAN VISITED THE MUSEUM TO SEE THE UPDATED DISPLAY ABOUT THE NEWSPAPER IN THE MUSEUM’S PRINT GALLERY. TODAY, THE AFRO IS LED BY FOURTH- AND FIFTH-GENERATION DESCENDENTS OF ITS FOUNDER, JOHN HENRY MURPHY, SR., MAKING IT THE LONGEST-RUNNING BLACK-OWNED FAMILY NEWSPAPER IN THE NATION.



Night Out for the BMI

June brought the Museum's first-ever Mini Golf event, a fun-filled evening of games at the museum. Golfers played their way through the museum's galleries as they enjoyed food, drink, and conviviality. While they played, they provided vital support for the BMI's award-winning educational programs.

Number of golfers:

219

Funds raised for the BMI's educational programs:

\$39,000

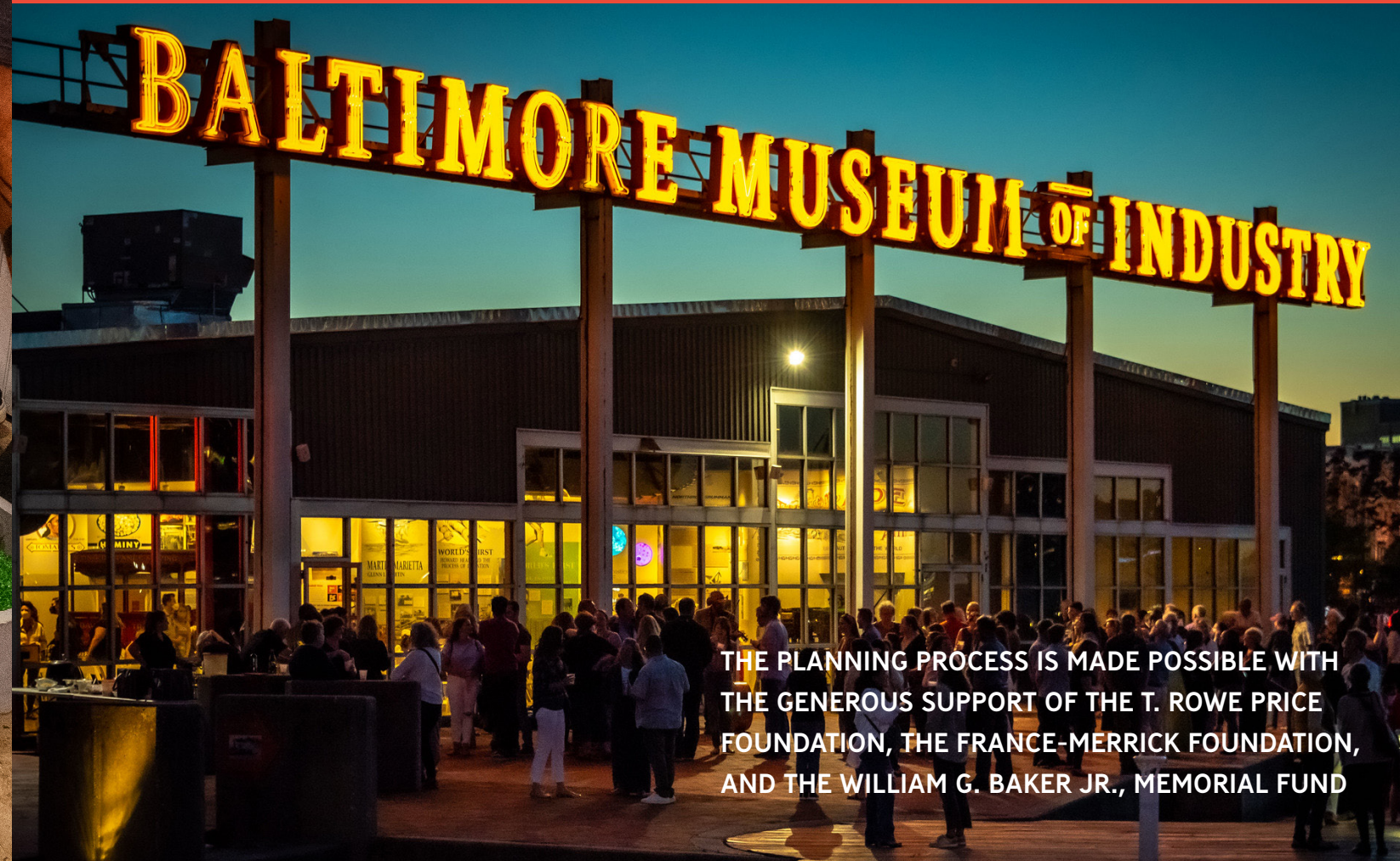


Envisioning the BMI's Future

In partnership with the DeVos Institute of Arts Management, the BMI embarked on the first phase of an ambitious institutional planning process. With a timely mission and a waterfront campus that, itself, is the site of past industrial activity, the BMI is poised for growth. The process will offer an honest assessment of the challenges facing the BMI, determine how our programs and activities can better serve the needs and interests of the communities we serve, and envision our pathway toward that future.

“T. Rowe Price is a proud supporter of BMI’s efforts to plan for its future. As a company that has been in the Baltimore community for over 85 years, we know that it’s important to have a living history of our business community and investing in the strength of such an important institution as the BMI is the best investment that we can make.”

John Brothers, President, T. Rowe Price Foundation



THE PLANNING PROCESS IS MADE POSSIBLE WITH THE GENEROUS SUPPORT OF THE T. ROWE PRICE FOUNDATION, THE FRANCE-MERRICK FOUNDATION, AND THE WILLIAM G. BAKER JR., MEMORIAL FUND

The Baltimore Museum of Industry recognizes the members of our community who made contributions between July 1, 2021 and June 30, 2022.

Annual Fund Supporters

The BMI’s Annual Fund helps us tell the stories of the people who built Baltimore and those who are shaping its future. It supports engaging educational activities, community programs, and ongoing preservation of industrial artifacts, all critical to achieving our nonprofit mission.

Public and Government Funders

2021 Baltimore Nonprofit Relief Fund
The Citizens of Baltimore County
The City of Baltimore in partnership with the Baltimore National Heritage Area
Howard County Government & Howard County Arts Council
Maryland State Department of Education
The U.S. Department of the Interior/U.S. National Park Service in partnership with the Baltimore National Heritage Area

Charles A. and Lois H. Miller Foundation
The Nestico Family
North American Electric, Inc.
PNC Bank N.A.
Bob & Barbara Roswell
Rotary Club of Baltimore
C. William & Linda Schneidereith
Mike & Karen Shealey
Brad & Carol Spring
Doris Sweet
The Edmund Eisenberg Memorial Fund for the Advancement of STEM Education
Tradepoint Atlantic
W. R. Grace & Co.

Leader’s Circle Recognizing gifts of \$10,000 +

ASR Group / Domino Sugar
William G. Baker, Jr. Memorial Fund, creator of the Baker Artist Portfolios, www.BakerArtist.org
BD Diagnostics
Richard Eaton Foundation
Institute of Museum and Library Services
International Coalition of Sites of Conscience
Estate of Allen H. Kassof
Arlene Kaufman* & Sanford M. Baklor
M&T Bank
Northrop Grumman Corporation
T. Rowe Price

Champion’s Circle Recognizing gifts of \$5,000 – \$9,999

BGE, An Exelon Company
Bunting Family Foundation
Delaplaine Foundation
Engineering Society of Baltimore Education Foundation & Engineers Week Council
Judi and Steven B. Fader Family Foundation, Inc.
Howard Bank
Huether-McClelland Foundation
John J. Leidy Foundation
LifeBridge Health

Pioneer’s Circle Recognizing gifts of \$2,500 – \$4,999

Mouna Aissaoui
American Trading & Production Corporation
Christine & Joseph Beddard
Leo V. Berger Foundation / Kassap Family
Mary Catherine Bunting
Linsley & William Carruth
James & Sara Deriu
Scott & Amy Ensor
Michael Hinkey & Kathryn Benson
Institute of Electrical and Electronics Engineers
Intralox
Deepak Jain
Matt Lenihan
Judy & Ray Lichty
Macht Fund of THE ASSOCIATED McCormick and Company, Inc.
Janet Novak
Old Line Custom Meat Company
Robert J. Patterson
Bryan & Christin Porter
Propeller Club of Baltimore
Michael & Rachel Raphael

Innovator’s Circle Recognizing gifts of \$1000 – \$2,499

Robert & Beverly Barnes
Campbell Foundation, Inc.
Clark Brands, LLC
Jeff & Laura Cooper
Matthew Doud
EMR – The Electric Motor Repair Company
Exelon
Richard Funke
Darius Graham
Michael Hill & Patricia Dann
Wallace & Mary Jeanne Hoff
HUB International Mid-Atlantic
Anita Kassof & Joshua Neiman
Dorothea Lankford
The William and Karen Lavoie Foundation
Marlin Steel
Laura & Dan McCoy
Jennifer McLaughlin
Nancy Patz & Patrick Harrington
Michael Reick
Nan Rohrer
Saval Foodservice
Robert W. Schaefer, In Honor of William Cole
Schluderberg Foundation
Evelyn Dyke Schroedl
Ida & Joseph Shapiro Foundation, Inc.
Raymond and Nickole Sharp
Bob Smerko
Southway Builders
St. John Properties
Paul & Karen Sugar
Vickie Swanson & Joseph Kovars
Target Circle Giving Program
Travers Foundation
Eric & Lori Veiel
Ryan & Leslie Wagner
Coricka V. White
Phillip J. “Jerry” Woodall

Entrepreneur’s Circle Recognizing gifts of \$500 – \$999

American Society of Civil Engineers
Streett Baldwin
Christopher Bathgate
David & Mary Covington
S. L. DeRosa
Donna Folkemer
Paul & Joanna Foster
Robert Friedel

Barbara & Michael Hettleman
Hope Furrer Associates, Inc.
Kathy Hudson & Greg Otto
Tom Humphreys
Robert & Pam Kaplan
KCI Technologies
Mary C. Mangione & Family
Marine Solutions, Inc.
Dr. Frank C. Marino Foundation
Ian Neuman
Number Ten Foundation
Jay & Crystal Nwachu
Paternayan-Ramsden Fund
Claire Ritterhoff
Bill Ruppertsberger
William Scott
Susan Shubin, In Memory of Charles I. Shubin
Madeleine Stokes
STV, Inc.
Philip & Joanne Tulkoff
Jesse W. Walter, Jr., In Honor of BW Chapter ATHS
Whitney Bailey Cox & Magnani, LLC
Suzanne Wolff*
Dr. Jane L. Wolfson and Mr. John K. Miller

Developer’s Circle Recognizing gifts of \$100 – \$499

Juliet Ames
Avant-Guarde Engineering
Russ Baer & Diane Swintek
Emily Bair & Bruce Bauman, In Memory of Alfred & Emma A. Milburn
Baltimore Community Foundation
Stephen Bank
Michael Barnes
Will & Leslie Bishop
Gary & Shirley Boats
Carolyn Boitnott
Stephen Bono
Mollie Bowers
Drs. Arlene and Stephen Bowes
Troy & Carol Brewer
Constance Brieger
David Bryan
Jack Burkert
Myrna & Ben Cardin
Douglas & Judy Celmer
Angela Chase
Marianne Cloeren & Timothy Donovan
Charles E. Conklin
Diane Darrah
Carolyn & Dan Davis
Avi Y. Decter

Madeline Dick and Michael Phipps
Nancy Dietrich
David B. Ditman
Kim* and Jean Doyle
Mike Duffy
Mark & Judy Elrod
Eric Eppler
Donna Ferrara
Brian Fitzek
Bob & Rosanne Fritz
David Fritz
Aaron Gold, In Honor of Iris Gold
Bob Greenfield
Robert Harrison
Arlen & Tom Hastings
Daniel Hayes-Patterson
Aaron Heinsman
Bob & Suzanne Henig
Will Hershkowitz
Robert Herstein
Hillis-Carnes Engineering Associates, Inc.
Sally Hopkins, In Memory of Joyce Hopkins
Karen Huddles
Bayly Janson-La Palme
Johnson, Mirmiran & Thompson
Ken Jones
Elizabeth Kahn
Patricia Karzai
Ellen Katz, In Honor of Jack B. Katz
Kenneth Kidd
Harry & Jane Kopp
Edward Koronowski
Andrea Fox Krupp & Dr. Bruce P. Mandel
Rick & Kathryn Kuethe
Nancy & Ed Kutler
Dr. John R. Lamkin II and The John Lamkin
Favorites Jazz Quintet
George* & Constance Long
Henry Louis
Dr. Vincent Lucarelli
Pat Mallon
Robert D. Matthews
Termcorp
Morabito Consultants
Margaret & Tom Mullins
George A. Murnaghan
Patricia Newby
Richard C. Nickels, Jr.
Michael Olive
David Packard, In Honor of Robert Packard
Mary Carroll Plaine
Maureen & James Prest
Kim Pritt
Rebecca Renick

Mark Rice
Justin Riemer
Carla Wolf Rosenthal & Alan Schwartz
Irene & Robert Russel
Robert W. Russell
Allen Salyer
Robert & Stuart Sanford
Mary K. Shaughnessy, in honor of Baltimore
artist Greg Otto
Linda & Jim Smith
Catherine Soares
Reed Spaulding
Joaneath Spicer
Spyder Engineers LLC
Erica Starr
Michael A. Stasiak
Mary C. Stearns, In Honor of Leonard F. Bosse
Michael B. Styer
John Teichmoeller & Kathy Farnsworth
Martha J. Tompkins
John Trautwein
Robert vom Saal
Wallace, Montgomery & Associates
Michael Wallach
Margaret Webbert
Robert Webbert
Mr. & Mrs. J. Thomas Wellener
Andrew & Geraldine White
The Whiting-Turner Contracting Company
Nancy & Richard Williams
Joan Wisner-Carlson
Evan Woodard / Salvage Arc
Cathie “CZ” Zimmerman
Duke & Phyllis Zimmerman

Matching Gifts

The Exeter Wealth Management Group at
Morgan Stanley
McCormick and Company, Inc.
T. Rowe Price

In-Kind Supporters

ASR Group / Domino Sugar
Balti Virtual
Gary & Shirley Boats
Cameron Davidson LLC
Direct Dimensions, Inc.
KONE Inc.
Len the Plumber
P. Flanigan & Sons

** Deceased*

Volunteers

American Truck Historical Society Volunteers

Herald Anderson
Mike Boteler
Dale Croston
Henry J. Fowler
Bruce Giel
Artie Guy
Tim Guy
Gary Mattingly
Andy McWilliams
Mark Powell
Nelson Smith
Alex Thomas
Mel Thomas
Jesse W. Walter, Jr.

Archives/Collections Volunteers

John Eybs
Ken Jones
Robert “Bob” Pratt
Jeff Tomecek
Marty Yaker
Miriam “Midge” Barton
Claire Brocato
Virginia Carlson
Leah Sims
Mark Twaroski
Cathie Zimmerman
Robert Friedel
Debbie Farthing
Jane Woltereck

At-Large Committee Volunteers

Joseph Abel
Alice Donahue
Matthew Hankins
Kathy Hudson
Ian Neuman
Mark Ruhl
Jessi Rutherford
Hal Wallace
Deb Weiner
Evan Woodard

Bendix Volunteers

Len Bosse
Stuart Horwitz
Ken Kidd
Ronald Sacker
Bill Scott
Guil Vogt
Jerry Woodall

Skilled Labor Volunteers

Philip “Phil” Levery
John Reuter

Development Volunteers

Becca Dobbs
Sandra Waters

Education Volunteers

Chris Cowles
Scott Sherlock

Gallery Volunteers

Steve Cole
Gordon Uchenick
Bob Webber

Interns

Myra Bland
Claire Brocato
Daryn Carter
Ian Crayton
Scott Hudson
Allie Lawrence
Robyn Levy
Liza McElroy
Julia Parker
Sophia Torres
Clair Volkening

Thank you!

Board of Trustees

Officers

Scott Ensor, Chair
Bryan Porter, Treasurer
Michael Raphael, Vice Chair
Nan Rohrer, Past Chair
Maddy Stokes, Secretary

Trustees

Chris Beddard
Linsley Carruth
Jeff Cooper
James Deriu
Matthew Doud
Quincy Goldsmith
Darius Graham
Deepak Jain
Joe Kovars
Matt Lenihan
Laura McCoy
Jen McLaughlin
Janet Novak
Jay Nwachu
Raymond Sharp
Paul Sugar
Coricka White

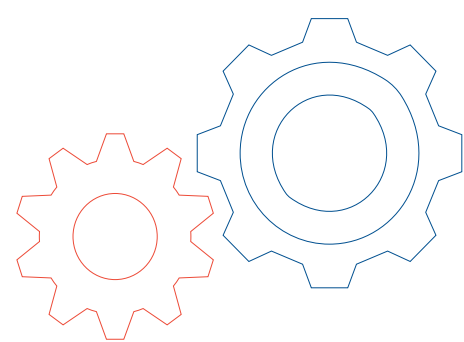
Staff

Gary Boats	Gaby Messinger
Jordan Brooks	Joel Miller
Jack Burkert	Claire Mullins
Deborah Cardin	Alexis Ojeda-Brown
Jessica Celmer	Del Riemer
Margaret De Arcangelis	Angie Scott
Becca Dobbs	Matt Shirko
Curtis Durham	O'Malley Steuerman
Kelley Edelmann	Kristen Straub
Lori Ferrara	Stanley Wake
Ann Fiocco	Kaitlyn Webster
Rebecca Friedman	Mary White
Adam Fuchs	Jane Woltereck
James Fulwiler	Deborah Wood
Auni Gelles	Aubrey Young
Deitrick Goodwin	Mubtasin Zaman
John Green	
Paula Hankins	
Estelle Harris	
Brandon Hintze	
Anita Kassof	
Ashley Knapik	
Mike Kuethe	
Jesse Lentz	
Beth Maloney	
Meghan Mann	
Maggi Marzolf	
Phil McKulka	

BMI Collection Donors

Michael Adams	Rollin M. Lewis
Anna Cooke Allison	Bruce Manger
John M. Altemeyer	Maryland Aviation Administration
Edward C. Amaducci	Maryland Center for History and Culture
Barbara G. Andersen	Fred Masterman
Jane Anderson	Mobern Electric
Baltimore City Historical Society	Beth Mosolgo-Clark
Frances Banks	Isle Overman
Ed Bartee, Jr.	Robert Patterson
Blaustein Family / American Trading and Production Corp.	Todd Peterson
H.E. "Jenny" Bowlus	Stephen Ports
Cat Eye Creative Art Gallery	Premier Mac Technologies
Carl Coburn	Pride of Baltimore, Inc.
Depue H. "Hap" Duffey	Sarah Quaty
Teresa Fraley	Harry S. Scott, III
Barbara Garrison	Marilyn Simmons
Joseph M. Giordano	Tom Somers
Joseph Gochar	Patricia Southworth
Globe Screen Printing Corp	Diane Stenzel-Oliphant
Susan M. Hamilton	Perry Stirling
Deborah Handelman	Nicholas Stokes
Connie Hill	Steven C. Swett
Historical Consulting	Eric Thompson
Ellen Marlene Hoffman	John B. Thompson
Daniel Horowitz	Scott Vickers
Margaret Keene	Estelle K. Wagner
Dorothea Lankford	Mike Wicklein
Philip Levery	Chris Williams
Jeff Levine	Jane Woltereck
	Evan Woodard





BALTIMORE MUSEUM OF INDUSTRY, INC.

Statements of Financial Position

<i>As of June 30,</i>	<i>2022</i>	<i>2021</i>
Assets		
Current Assets		
Cash and cash equivalents	\$ 1,782,063	\$ 1,293,059
Accounts receivable	47,776	43,666
Investments	516,344	597,252
Inventory	16,939	14,183
Prepaid expenses and other current assets	19,188	37,206
Total Current Assets	2,382,310	1,985,366
Land, property, and equipment, net	1,930,441	2,075,398
Other Assets		
Investments - restricted	150,000	150,000
Collections and exhibits, net	207,382	212,180
Total Other Assets	357,382	362,180
Total Assets	\$ 4,670,133	\$ 4,422,944
Liabilities and Net Assets		
Current Liabilities		
Accounts payable	\$ 17,482	\$ 27,616
Accrued expenses	150,674	112,027
Deferred revenue	38,288	140,600
Event deposits	255,272	295,933
Current maturities of Paycheck Protection Program loan (Note 5)	-	135,127
Current maturities of notes payable	103,849	102,504
Total Current Liabilities	565,565	813,807
Long-term Liabilities		
Notes payable, net of current maturities and deferred loan fees	2,315,196	2,401,717
Total Long-term Liabilities	2,315,196	2,401,717
Total Liabilities	2,880,761	3,215,524
Commitments and Contingencies (Notes 10 and 13)		
Net Assets		
Without donor restrictions		
Undesignated	1,657,663	1,029,390
Total Without Donor Restrictions	1,657,663	1,029,390
With donor restrictions	131,709	178,030
Total Net Assets	1,789,372	1,207,420
Total Liabilities and Net Assets	\$ 4,670,133	\$ 4,422,944

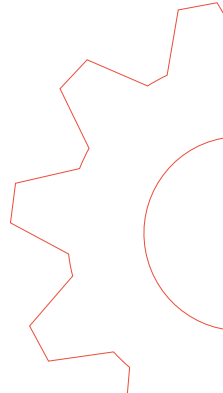
Full audit available by calling 410.727.4808 ext 152

BALTIMORE MUSEUM OF INDUSTRY, INC.

Statement of Activities
For the Year Ended June 30, 2022
(with Comparative Totals for June 30, 2021)

	Without Donor Restrictions	With Donor Restrictions	Total 2022	Total 2021
Public Support				
Contributions and pledges	\$ 428,653	\$ 108,552	\$ 537,205	\$ 595,664
Donated facilities, equipment, and services (non-grant)	529,005	-	529,005	459,733
Grants	837,729	-	837,729	728,462
Membership support	22,827	-	22,827	15,710
Total Public Support	1,818,214	108,552	1,926,766	1,799,569
Revenues				
Programs	234,992	-	234,992	54,092
Event rentals	698,602	-	698,602	121,455
Fundraising events	195,027	-	195,027	55,681
Sales and rentals, net	83,462	-	83,462	78,688
Total Revenues	1,212,083	-	1,212,083	309,916
Net Assets Released from Restrictions	154,873	(154,873)	-	-
Total Public Support and Revenues	3,185,170	(46,321)	3,138,849	2,109,485
Expenses				
Program services	2,023,126	-	2,023,126	1,675,333
Supporting services	254,569	-	254,569	242,138
Fundraising	360,822	-	360,822	315,664
Total Expenses	2,638,517	-	2,638,517	2,233,135
Other Income				
Investment income (loss)	(78,507)	-	(78,507)	7,898
Other income	25,000	-	25,000	-
Paycheck Protection Program	135,127	-	135,127	119,812
Other Income	81,620	-	81,620	127,710
Increase (Decrease) in Net Assets	628,273	(46,321)	581,952	4,060
Net Assets, Beginning of Year	1,029,390	178,030	1,207,420	1,203,360
Net Assets, End of Year	\$ 1,657,663	\$ 131,709	\$ 1,789,372	\$ 1,207,420

Full audit available by calling 410.727.4808 ext 152





BMI Baltimore Museum
OF Industry

1415 KEY HWY, BALTIMORE, MD 21230
(410) 727-4808

thebmi.org